

CONFIDENTIAL



TB370W PRESENTATION

**Design and features on this document are based on test machines.
These specifications could change for mass production machines.**

© 2023 Takeuchi Manufacturing [JAPAN], Ltd. All Rights Reserved.

TAKEUCHI
From World First to World Leader

TB370W Introduction

Takeuchi has been aware that demand for wheeled excavators has been growing and will continue to do so for the future. With high demand for wheeled excavators, Takeuchi is expanding its wheeled excavator line up by developing a 7 ton class wheeled excavator, TB370W.

As the model name indicates, the TB370W shares the basic design concept with its base machine, TB370. Machine performance is equivalent to the TB370 which is already well received by many customers in the world.



TB370W Specification

		TB370W 2-Piece Boom
Operating Performance		
Operating Weight (with Dozer Blade)	kg	7555
Operating Weight (with Dozer Blade and Outrigger)	kg	7900
Bucket Capacity (Heaped)	m ³	0.18
Maximum Bucket Breakout Force	kN	48.4
Maximum Arm Digging Force	kN	29.4
Traction Force	kN	61.7
Slew Speed	min ⁻¹	8.8
Travel Speed (Low Speed 1)	km/h	2.8
Travel Speed (High Speed 1)	km/h	10.0
Travel Speed (Low Speed 2)	km/h	6.5
Travel Speed (High Speed 2)	km/h	29.6
Engine		
Model		Kubota V2607-TE5AB-BHTU-1
Rated Output (ISO 14396)	kw / min ⁻¹	54.6 / 2700
Maximum Torque	Nm / min ⁻¹	222 / 1600
After Treatment Device		DPF / DOC
Machine Dimensions		
Overall Length (Dozer Blade)	mm	6023
Overall Length (Dozer Blade and Outrigger)	mm	6349
Overall Width	mm	2100
Overall Height	mm	2888
Wheel Base	mm	2100
Slew Radius	mm	1450
Maximum Reach	mm	6907
Maximum Digging Depth	mm	3775
Maximum Dumping Height	mm	5288

		TB370W 2-Piece Boom
Hydraulic System		
Boom, Arm, Bucket, Blade		
Flow Rate	L/min	160
Relief Pressure	MPa	24.5
Slew		
Flow Rate	L/min	46.2
Relief Pressure	MPa	19.1
Travel		
Flow Rate	L/min	80
Relief Pressure	MPa	35.0
Service Port 1		
Flow Rate	L/min	120
Hydraulic Pressure (STD)	MPa	21.0
Hydraulic Pressure (OPT)	MPa	24.5
Service Port 2		
Flow Rate	L/min	55
Hydraulic Pressure	MPa	21.0
Service Port 3		
Hydraulic Pressure	MPa	21.0
Service Port 4		
Flow Rate	L/min	55
Hydraulic Pressure	MPa	21.0

Competitive Comparison

		TB370W 2-Piece Boom	Wacker Neuson EW65	Yanmar B75W	Volvo EW60E
Operating Weight (with Dozer Blade)	kg	7375	7020	7400	6292
Engine Model		Kubota V2607-TE5AB-BHTU-1	Perkins 404J-E22T	Yanmar 4TNV98CT	Volvo D2.6H
Rated Output (ISO 14396)	kw / min ⁻¹	54.6 / 2700	42.0 / 2000	53.7 / 2000	47.3 / 2400
Maximum Torque	Nm / min ⁻¹	222 / 1600	192 / 1800	300 / 1600	221.6 / 1500
Bucket Capacity (Heaped)	m ³	0.18	N/A	0.087 ~ 0.303	0.187
Maximum Travel Speed	km/h	29.6	30	30	30
Slew Speed	min ⁻¹	8.8	9.0	10.0	10
Maximum Bucket Breakout Force	kN	48.4	46.0	38.0	43.3
Maximum Arm Digging Force	kN	29.4	27.4	30.0	25.4
Overall Length	mm	6349	6220	6030	6220
Overall Width	mm	2100	2088	2200	2200
Overall Height	mm	2876	2775	2935	2833
Slew Radius	mm	1450	1459	1480	1675
Maximum Reach	mm	6907	6877	7300	6729
Maximum Digging Depth	mm	3747	3895	3880	3603
Maximum Dumping Height	mm	5316	5195	5050	5597

TB370W Features

STANDARD EQUIPMENT

- Cab
- EU Stage V / US Tier 4 Compliant Engine
- DPF Engine Solution
- Working Modes: Standard, ECO and ECO Plus (automatically changes working modes between standard and ECO depending on the load)
- Air Suspension Seat
- Dozer Blade
- 2-Piece Boom
- Boom Holding Valve with Alarm
- Arm Holding Valve
- Adjust Cylinder Holding Valve
- Proportional Control for AUX 1 & AUX 2
- High Flow for AUX 1
- Automatic Control A/C System
- Double Element, Air Cleaner
- Fuel Transfer Pump
- Air Breather, Hydraulic Tank
- Accumulator
- Bluetooth DAB Radio w/ Hands-Free Phone Call Function
- Detent Mode for AUX 1
- Rear View Camera
- Tool Box
- Steering Valve with Emergency Steering Wheel Function
- Auto Tank for AUX 1
- LED Head Lights & Tail Lamp
- LED Working Light Package
- Swing Stopper
- Auto Cruise
- Diff Lock
- TFM (Takeuchi Fleet Management; GPS) *

OPTIONAL EQUIPMENT

- Lifting Point of Bucket Linkage
- 2-Way Lever (A-G)
- AUX3 / AUX 4 (Upper Mount or Side Mount)
- Independent AUX4 with Multi Functional Grip
- Service Port Performance Package
 - Auto Pressure Release
 - Pressure Adjustment
 - High Pressure for AUX1
- Roof Guard Kit
- Front Guard
- Rain Guard
- 270° View Monitor
- Outrigger
- Additional Tool Box
- Back Buzzer
- Arm Position Lamp
- Outrigger
- Mud Guard
- Auto Digging Brake
- TSS (Takeuchi Security System; Immobilizer) **
- Bucket Operation Angle Selection Device (Mechanical)
- Boom Suspension

* TFM is standard equipment only in Europe and North America

** TSS is available only in Europe

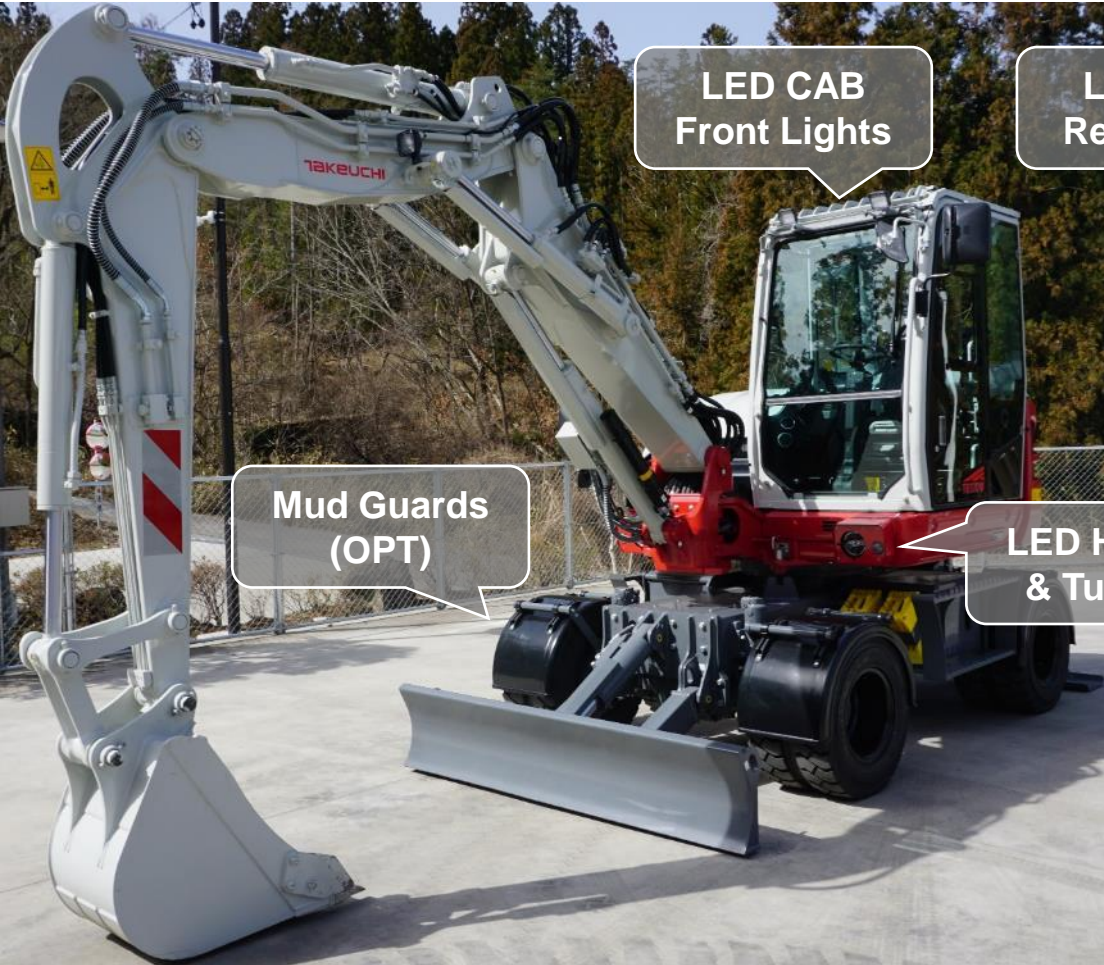
TB370W Key Features

1. Latest Generation 300 Series Exterior & Interior Design
2. Excellent Serviceability
3. Mudguards (To be available in near future)
4. Auto Digging Brake
5. Auto Cruise Control
6. LED Headlights & Tail Lamps
7. Boom Suspension (To be available in near future)
8. Bucket Operation Angle Selection Device (To be available in near future)
9. Other New Features

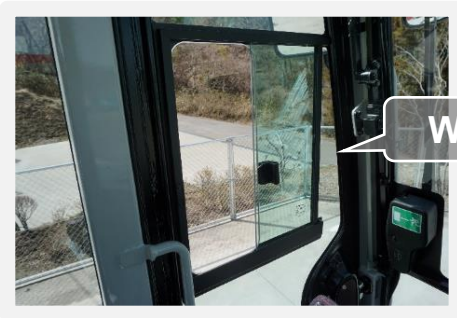


1. Latest Generation Exterior & Interior Design

Up to 4 AUX Lines
(Upper or Side Mount, OPT)



1. Latest Generation Exterior & Interior Design

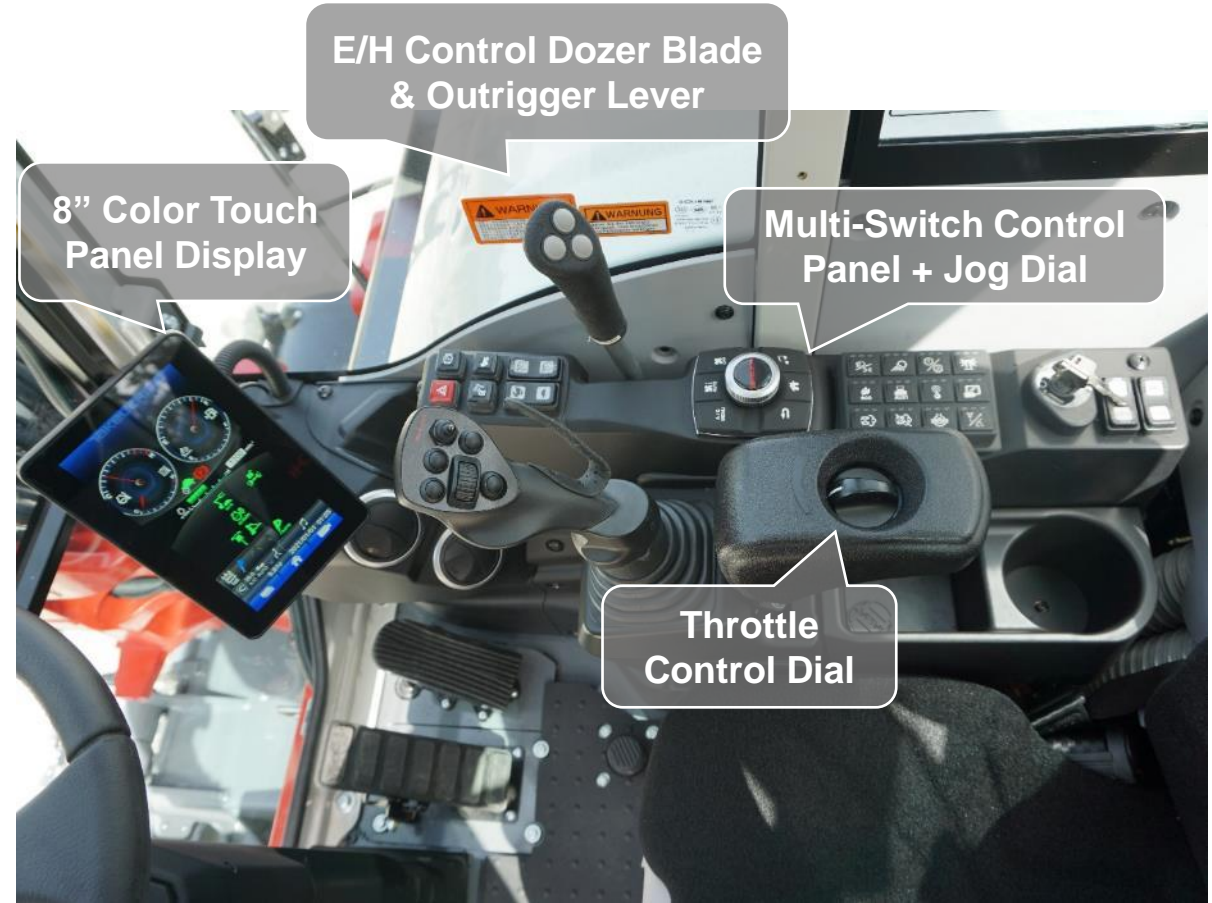


Window on the Cab Door



Tiltable Steering Wheel

Pilot Control Multi Function Grip (OPT)



E/H Control Dozer Blade & Outrigger Lever

8" Color Touch Panel Display

Multi-Switch Control Panel + Jog Dial

Throttle Control Dial

1. Latest Generation Exterior & Interior Design

- 8 inch Color Touch Panel Display -



Main Screen

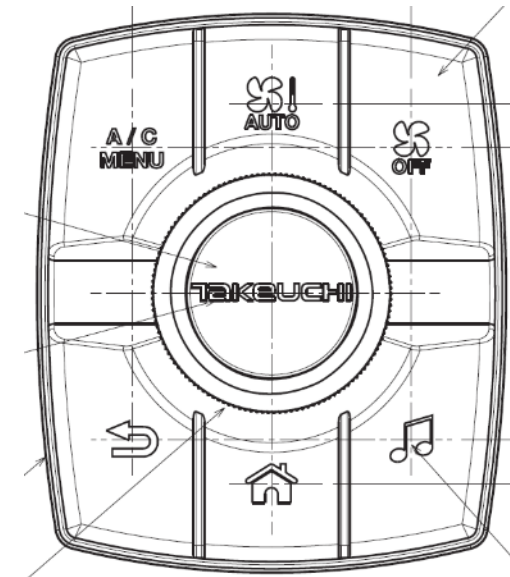


Air Conditioner Screen

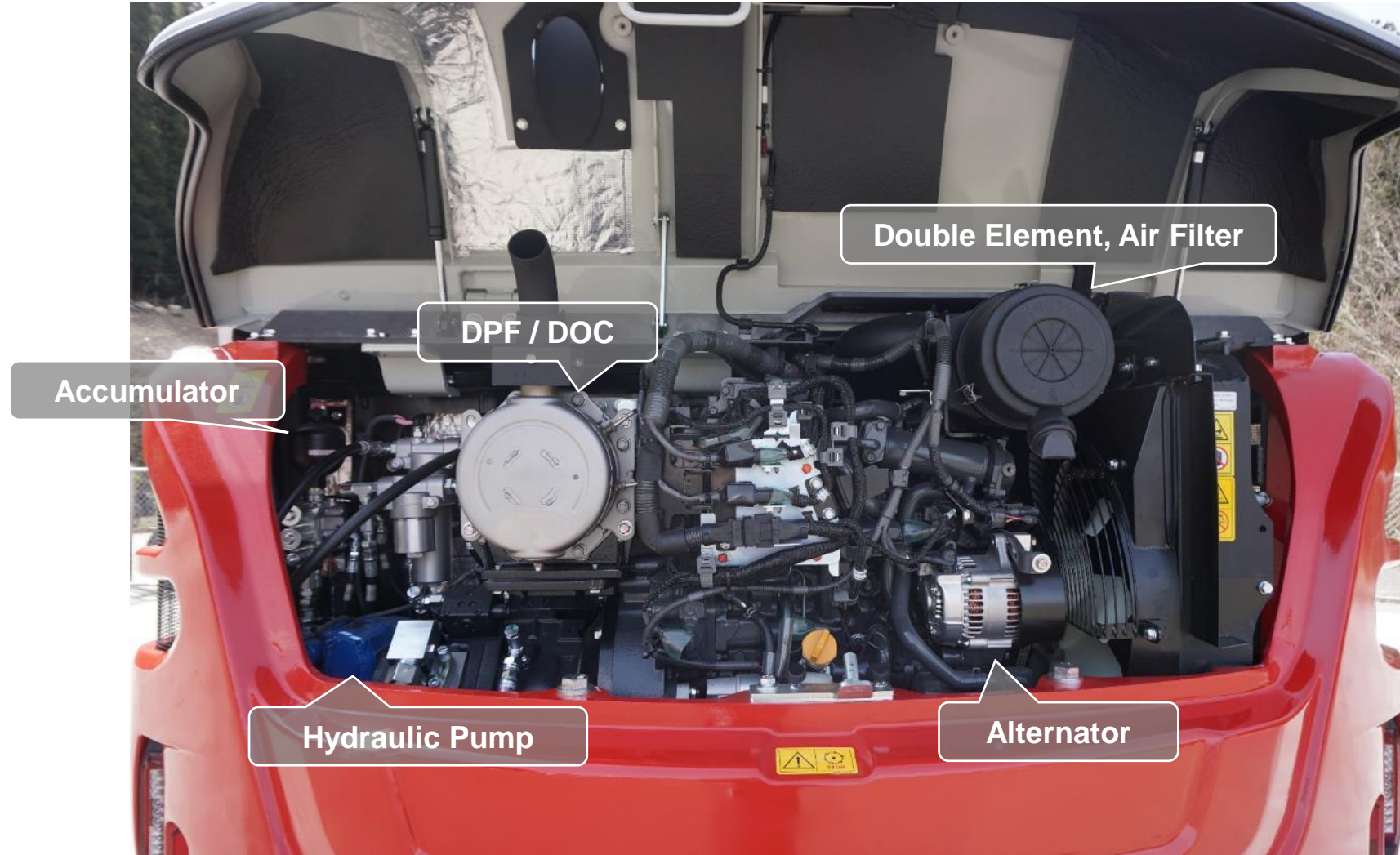


Radio Screen

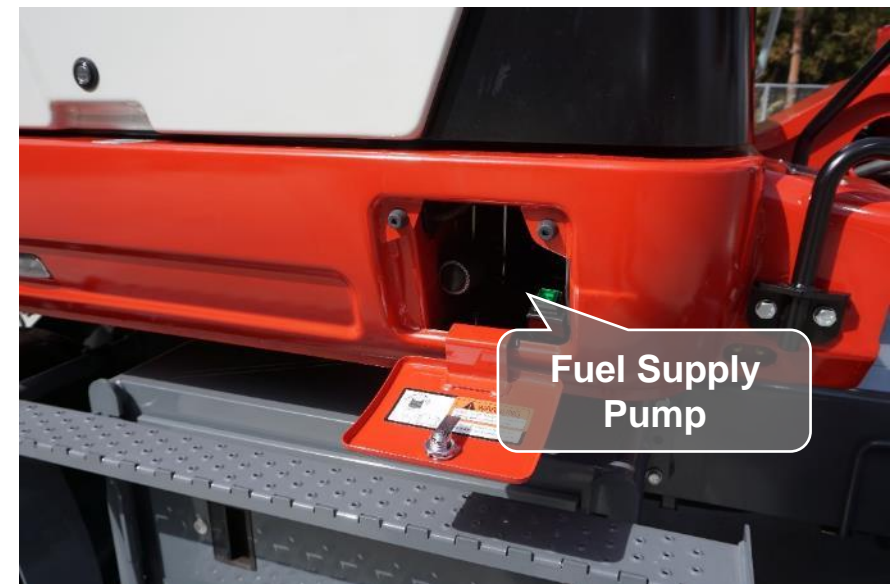
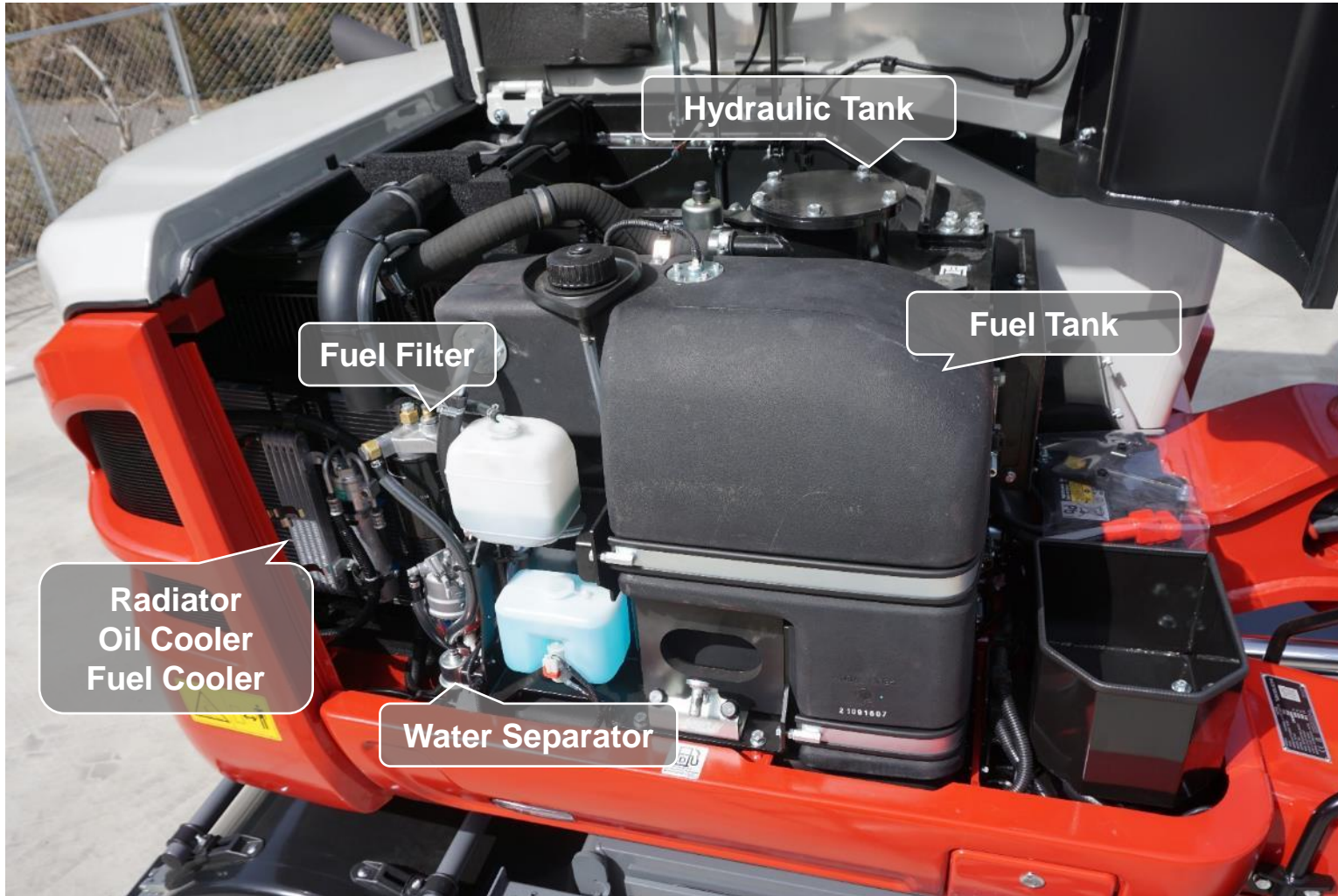
Air conditioning and radio function are incorporated into the touch screen display. Operator can switch the screen by touching panel or turning the jog dial.



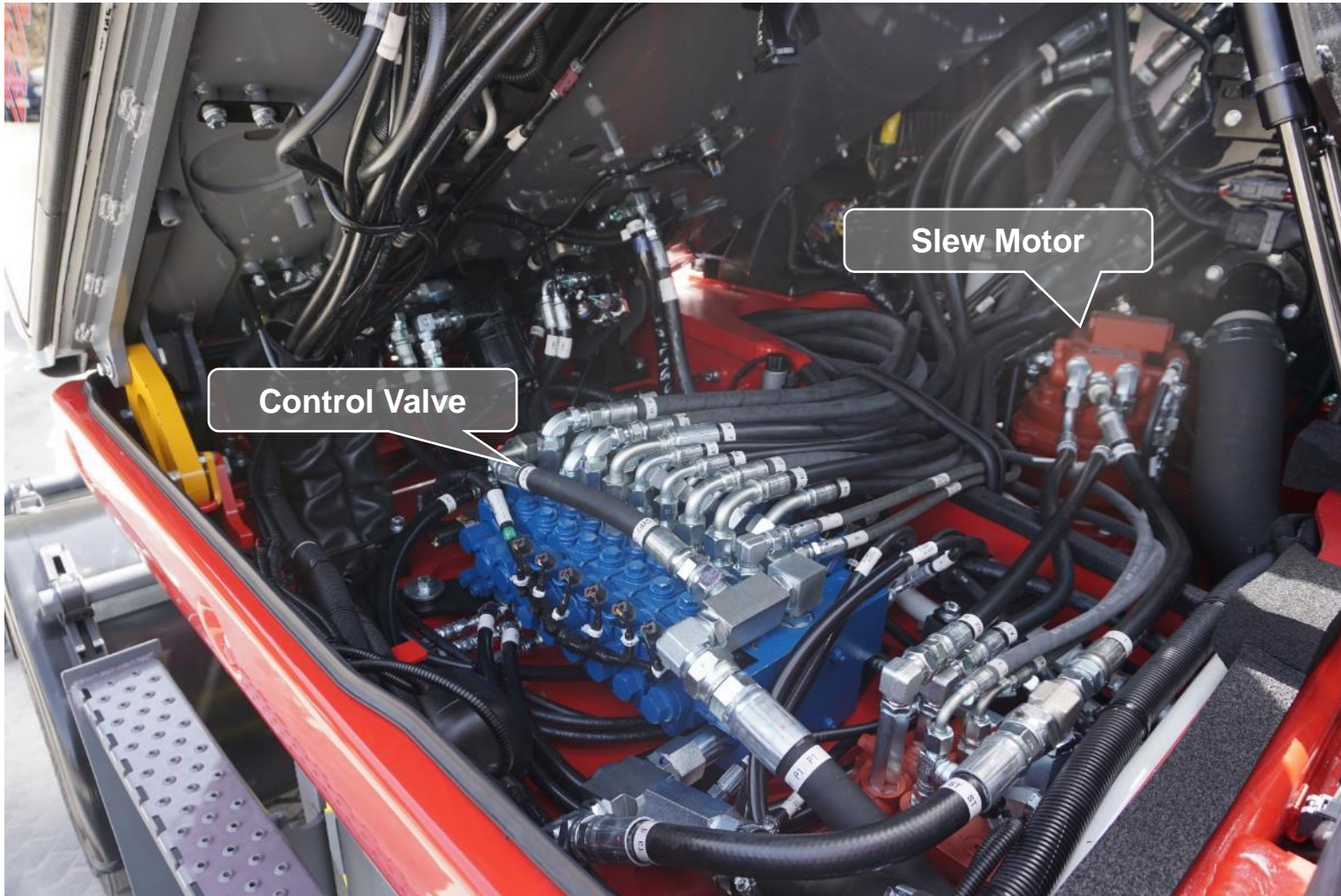
2. Excellent Serviceability - Engine -



2. Excellent Serviceability



2. Excellent Serviceability



3. Mudguards

- Prevent muds from covering lights or front window.

*** This function is under development right now and will not be available from the beginning of mass production.**



4. Auto Digging Brake (OPT)

- Automatically applies brake and RAM Lock when the machine is stopped.

How Auto Digging Brake is controlled;

[Conditions to apply brake]

- Brake is applied automatically when all of following conditions are met;
 1. Travel pedal is OFF (not pressed)
 2. Speed sensor at axle detects machine is stopped.
 3. Gear is in 1st and digging mode is activated.

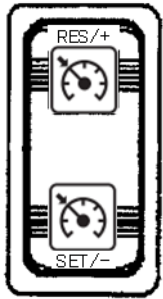
[Conditions to release brake]

- Brake is released when one of the following conditions are met;
 1. Auto Digging Brake switch is OFF
 2. Travel pedal is ON (pressed)
 3. Gear is changed to 2nd

5. Auto Cruise Control

- Just like automobiles, Auto Cruise enables to set forward traveling speed and adjust traveling speed by pressing button or operating toggle switch (equipped on optional Multi Functional Grip).

Operation



Pressing RESUME Button

Last set target speed is resumed and Auto Cruise mode is activated.

Pressing SET Button

Current travel speed is set as target speed and Auto Cruise mode is activated.

Pressing + / - Buttons

Changes target speed (up or down).



If Multi Function Grip is equipped, target speed can be adjusted up or down by operating toggle switch.

Display Indication



When RESUME Button is pressed

Last target speed level is indicated when pressing RESUME button once. When pressing RESUME button again, the icon turns from gray to green and actual travel speed starts to increase up to target travel speed.



When SET Button is pressed

The icon turns green and current travel speed level is indicated.



***Travel speed level does not indicate actual travelling speed.**

6. LED Headlights & Tail Lamps

- Headlights, turn signals, tail lamps, and working lights are all LED.



7. Boom Suspension (OPT)

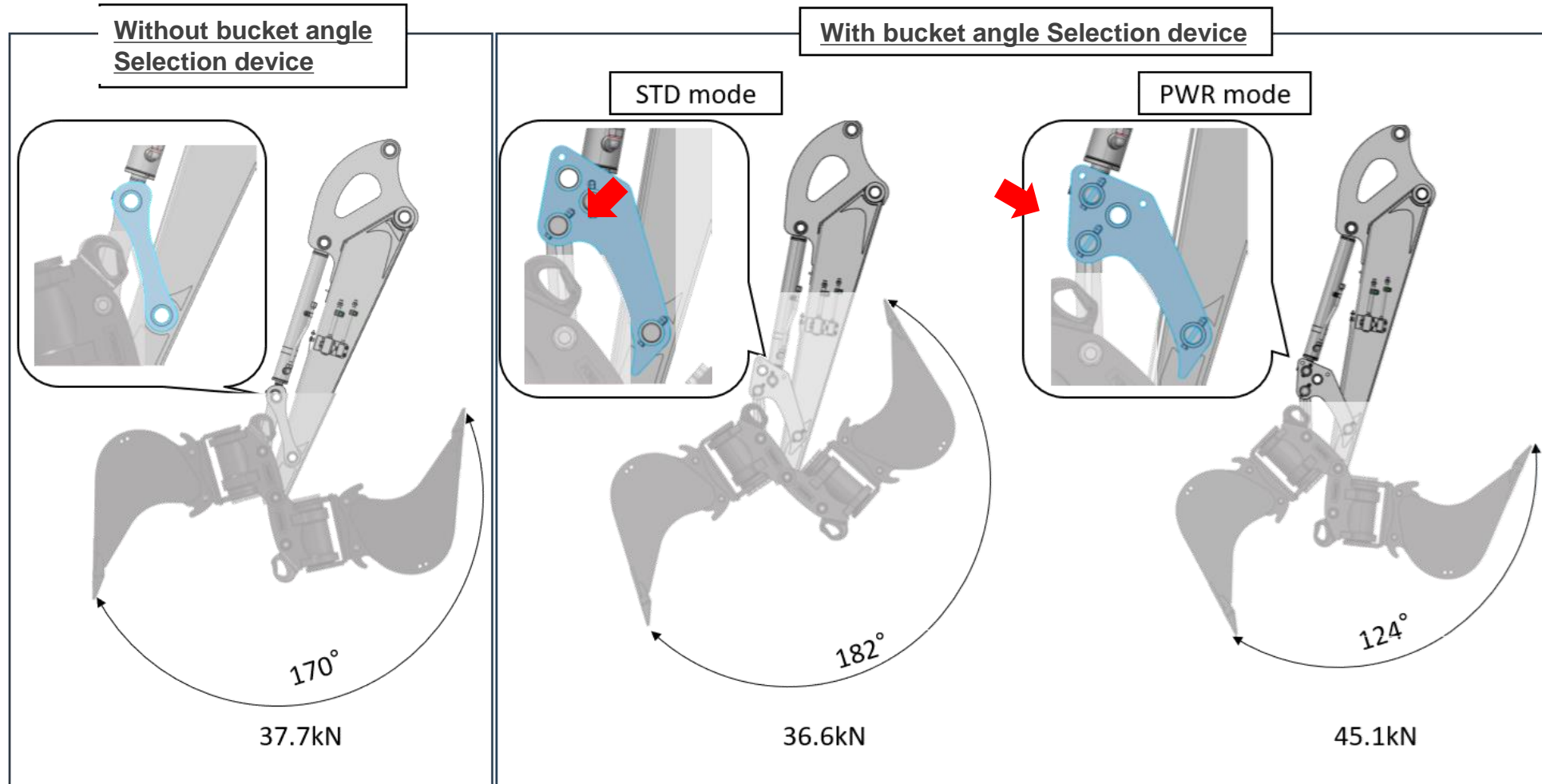
- An accumulator is added to boom cylinder holding circuit to reduce machine vibration.



*** This function is under development right now and will not be available from the beginning of mass production.**

8. Bucket Operation Angle Selection Device (Mechanical) (OPT)

- Ability to change bucket operation angle and bucket breakout force mechanically.



* This function is under development right now and will not be available from the beginning of mass production.

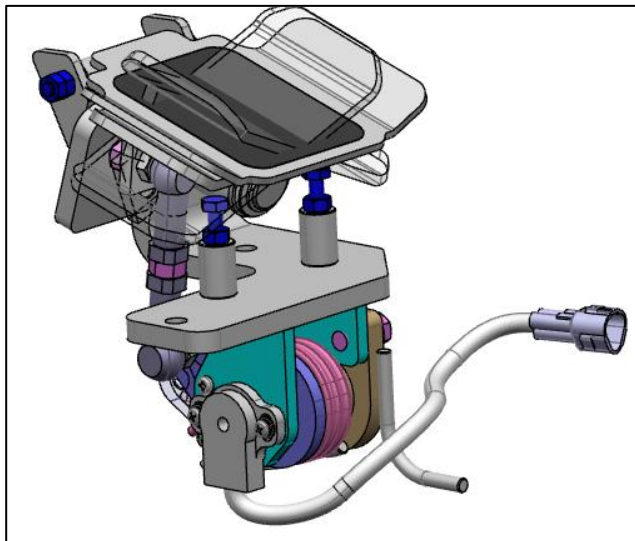
270-degree Camera (OPT)

- Three cameras provide birds-eye view around the machine.

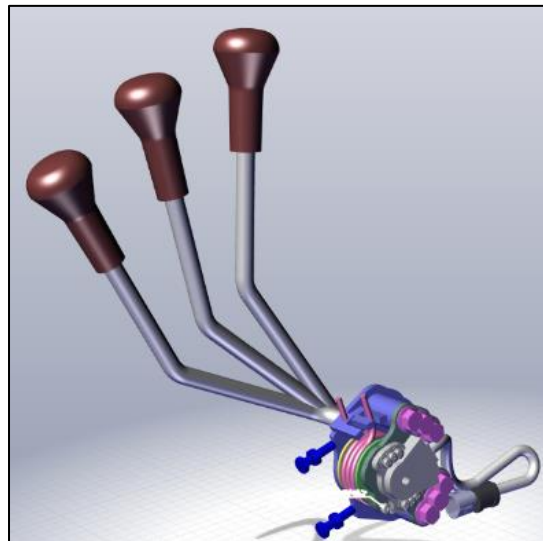


E/H Control for Dozer Blade, Boom Swing, and Adjust Cylinder

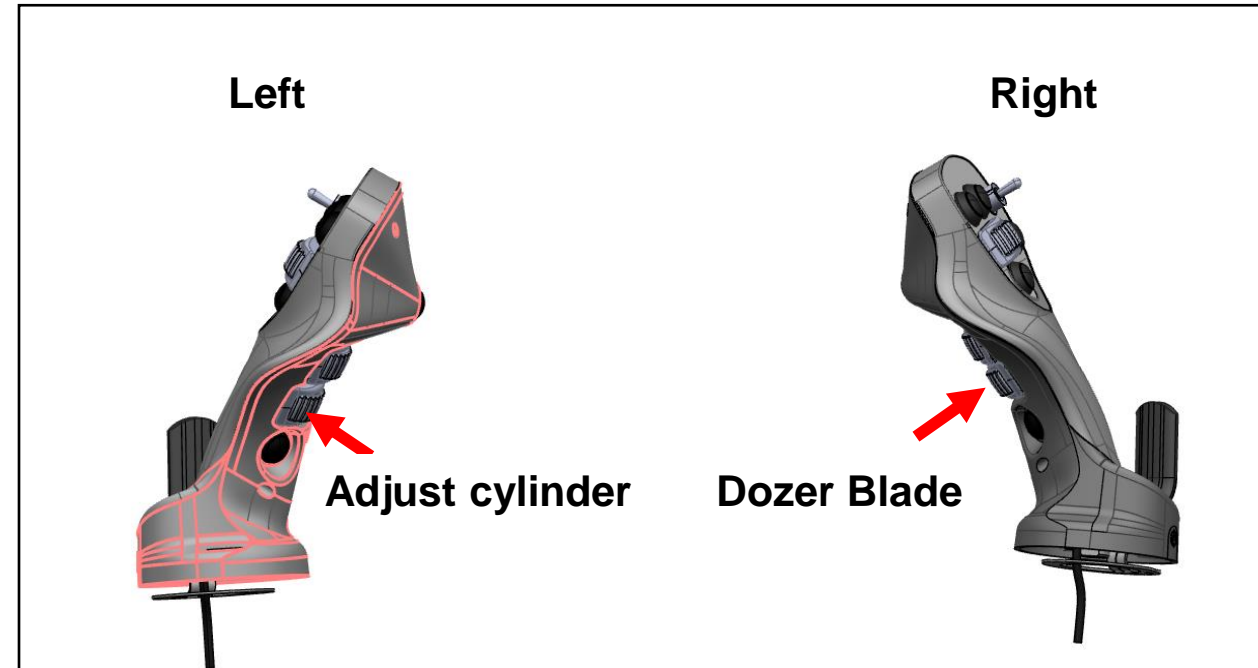
- Dozer blade, boom swing, and adjust cylinder functions are changed to E/H control, which enables boom swing and adjust cylinder to be operated not only by pedal but also by Multi Functional Grips. Dozer blade (Outtrigger) can be operated by Multi Functional Grips as well. It requires Takeuchi Service Tool to change the allocation.



**Boom Swing
/ Adjust Cylinder pedal**



Dozer Blade Lever

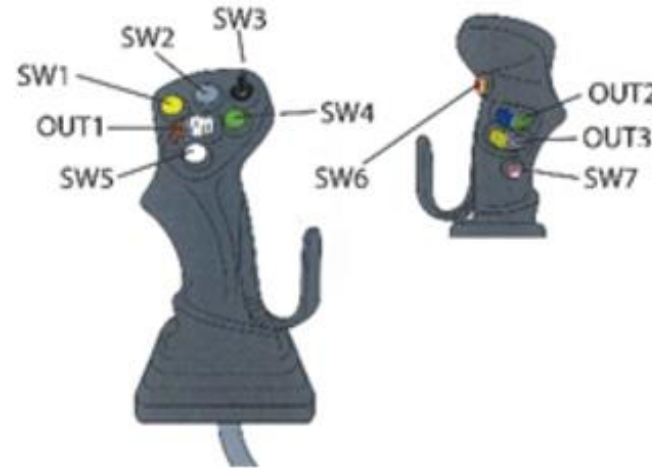
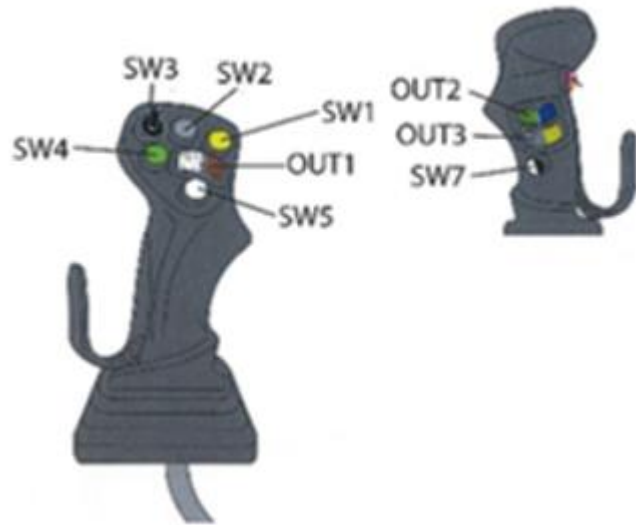


Multi Functional Grips

Multi Functional Grips (OPT)

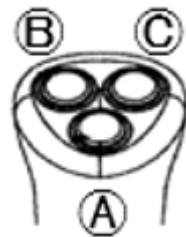
Original button layout of Multi Function Grips and Dozer Blade Lever.
(button allocation can be changed by Takeuchi Service Tool)

OUT1	AUX1
OUT2	AUX2
OUT3	N/A
SW1	AUX1_B
SW2	AUX1_A
SW3	Auto Cruise
SW4	N/A
SW5	N/A
SW6	AUX3
SW7	N/A



OUT1	AUX4
OUT2	N/A
OUT3	N/A
SW1	Horn
SW2	Decel
SW3	Travel F-N-R
SW4	N/A
SW5	N/A
SW6	N/A
SW7	N/A

Dozer Blade
lever



Button A: Switches between Dozer Blade and Outrigger.
When Outrigger mode is selected;
- Left outrigger is operated by lever while pressing Button B.
- Right outrigger is operated by lever while pressing Button C.

Double Slide Seat

TB370



- Both joystick covers are fixed.
- Only operator's seat slides.
- All switches and dozer blade lever are integral structure with right panel.

TB370W



Operator's seat, joysticks, all switches, and blade lever slide as one unit.

Tiltable Roof Guard



Remove two bolts to raise the roof guard.



To close the guard, raise the guard and pull the stopper.



TAKEUCHI[®]